

INDICATIVE CONDITIONS FOR APPOINTMENT ON RTN FUNDING

In the following schematic, the conditions under which a researcher can be appointed within a Research Training Network are described.



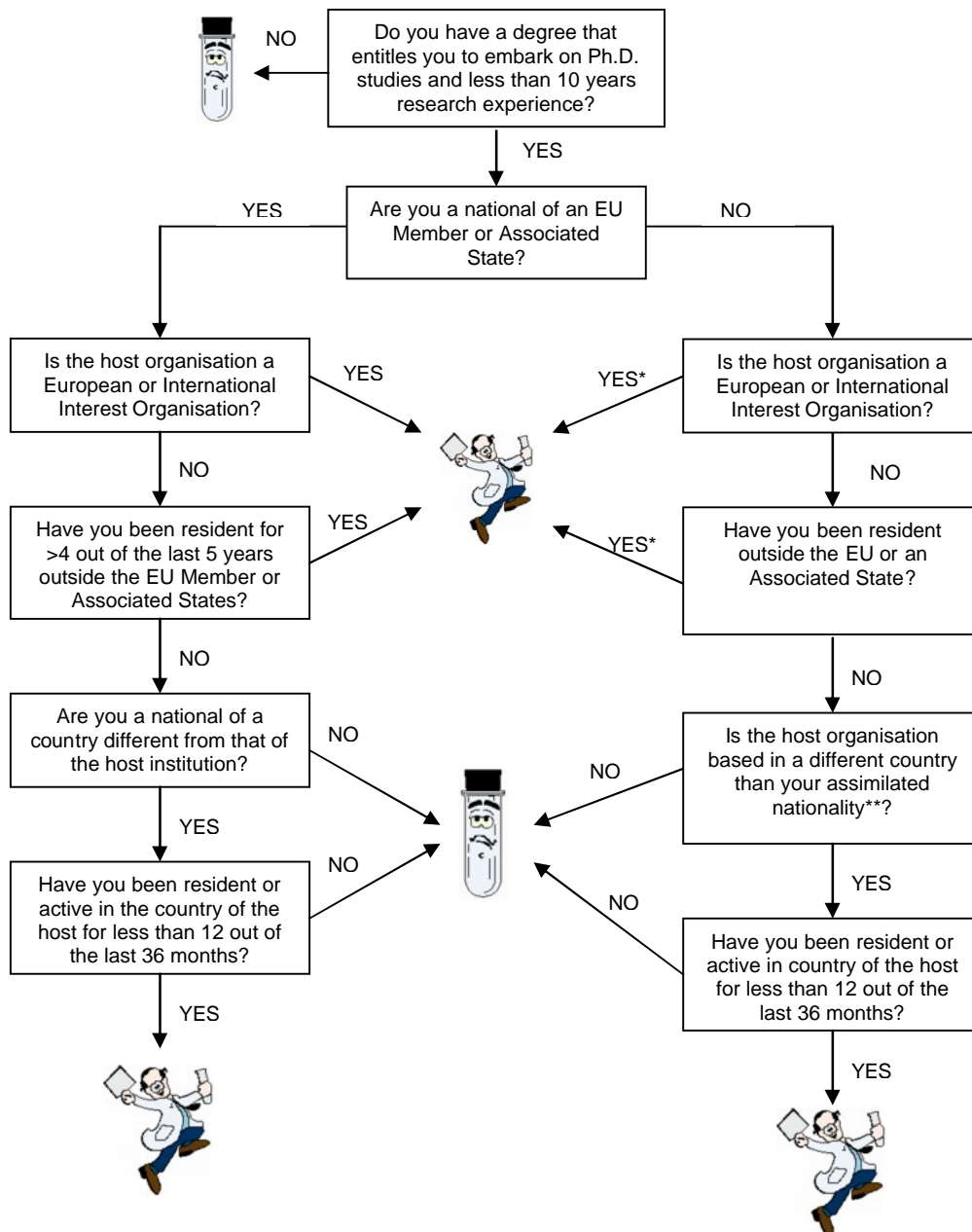
You might be eligible



You are probably not eligible



Can I apply?



*Within the 30% limit for the number of person-months for Third Country researchers.

**If you have resided at least 4 out of the last 5 years in a Member/Associated state you are treated as national of a Member/Associated State. The assimilated nationality refers to the nationality of the EU Member or Associated State in which you have resided the longest during the last 5 years.

5.7 Conditions of the Appointment

An important aspect of the Commission's policy towards researchers is to improve their working and living conditions, whilst retaining their mobility, thereby opening up new perspectives for research careers within Europe. The Marie Curie Actions should act as a catalyst in this respect. The organisations will therefore be required to meet certain conditions when appointing researchers. As described in section 6, they will receive living allowances relative to the cost-of-living in the country of appointment, along with mobility and travel allowances that depend on their family circumstances. In addition, provision of maternity/parental leave will be compulsory.

The European Commission has adopted a European Charter for Researchers and a Code of Conduct for the Recruitment of Researchers. These two documents are key elements in the EU's policy to make research an attractive career, which is a vital feature of its strategy to stimulate economic and employment growth. Participants in the Marie Curie Actions are encouraged to follow the principles of the Charter and Code of Conduct in the implementation of these actions (reference provided in Annex VII)

When making appointments within a RTN, organisations can opt for a fixed-amount stipend or an employment contract. In both cases, compulsory social security cover under the legislation in the country of appointment is mandatory. As a rule, fixed-amount stipends should only be used for the appointment of *early-stage researchers* (typically Ph.D. students). It should be stressed that **the appointment of experienced researchers should always be under employment contracts, unless duly justified.**

Regarding the duration of the appointment:

“The training opportunities for researchers within the coherent training and mobility scheme provided by the project may range from 3 months to 3 years.”

(Work Programme section 2.3.1.1)

It should enable each researcher to gain most benefit from their involvement in the network (e.g. to attend several network-wide workshops or meetings).

It should be noted that the *early-stage and experienced researchers* will have contracts with the research organisations and not directly with the Commission:

“Eligible researchers under these schemes are “third party” beneficiaries of the Marie Curie actions. They do not sign a contract with the Commission, but benefit from the Marie Curie actions and are therefore in this way beneficiaries of Community funds”.

(Work Programme section 2.5.3)